

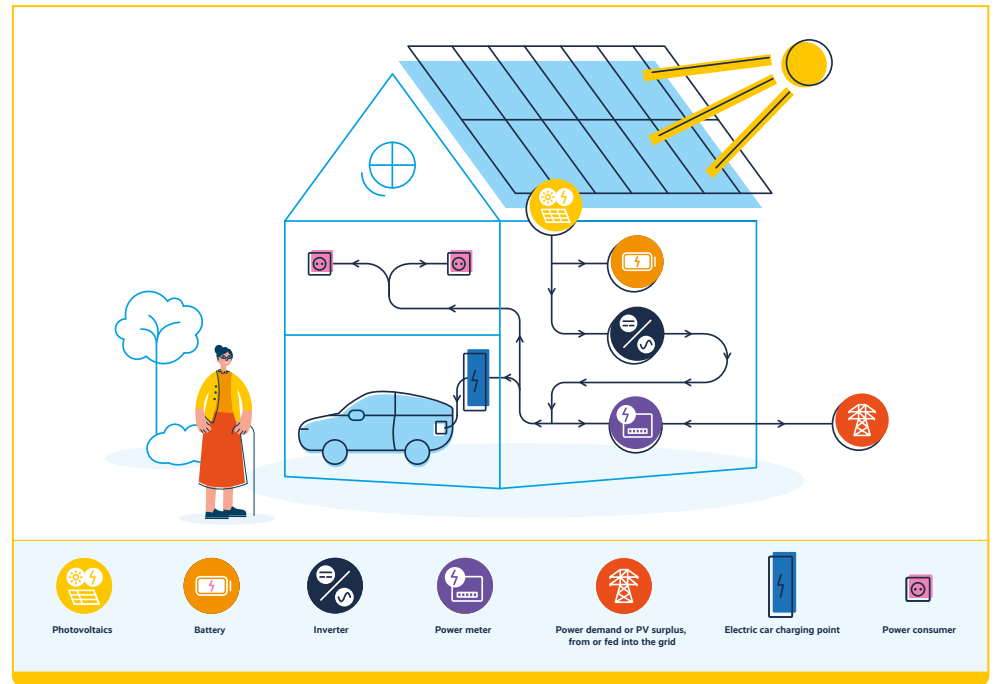
# Information for the installation of photovoltaic panels

## Background information

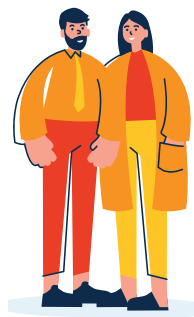


Discover the solar potential of your roof at [energie.geoportail.lu](http://energie.geoportail.lu)

Photovoltaic (PV) panels are devices that convert sunlight into electricity through solar cells. This electricity is a renewable energy that contributes to the fight against climate change and reduces energy costs.



## Necessary steps



### The customer

- Contacts their Klima-Agence advisor to learn about the necessary steps for their project and to discuss any specific needs they may have, e.g. if the house is of historical interest or part of a co-ownership.
- Contacts their municipal authority to find out about building regulation requirements.
- Schedules an on-site appointment with one or more qualified solar installers to assess the potential for installing photovoltaic panels and the current condition of the roof.
- Must choose a feed-in method for the electricity produced (full feed-in to the grid or self-consumption with surplus feed-in to the grid).



Energy from photovoltaic panels can be self-consumed (individual self-consumption), shared with other users (collective self-consumption, shared within an energy community or an energy cooperative) or injected into the grid.

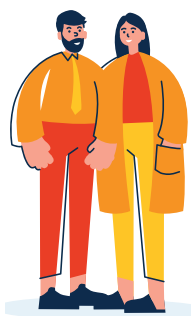
To find out about the various modes of consumption, visit the page “Generating electricity from the sun”: [klima-agence.lu/pv-advantages](http://klima-agence.lu/pv-advantages)

02



### The installer

- Prepares a quotation for the customer and may carry out a yield simulation and a profitability analysis.



### The customer

- Receives and evaluates the offers submitted by installers.
- Signs the quotation (provided that the electricity grid operator agrees to connect the installation to the public network).
- Must choose a feed-in arrangement for the produced electricity ( 100% feed-in or self-consumption with surplus fed into the grid).
- Declares the work to the municipality and/or requests the building permit.



### A few things to check on your offer:

- The costs related to the installation of photovoltaic panels are detailed and clearly identifiable for the Klimabonus state subsidy application.
- The company is registered with the Trade Register and has the right to operate in Luxembourg (lbr.lu) select the RCS portal, in "Offered Services" click on "Search for an RCS file".
- For single-family homes, 3% VAT is applied to photovoltaic panels (battery excluded).

03

04



### The installer

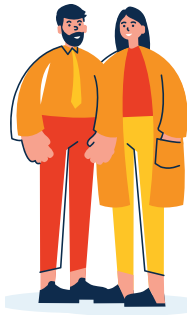
- Prepares the connection agreement request for the installation to be signed by the customer and submitted to the grid operator.

05



### Grid operator

- Checks whether the planned installation request is complete and feasible in relation to the grid.
- Once the application has been approved, if desired, the customer/electrician may set an on-site appointment with the grid operator to learn how to operate the system.
- Sends the form indicating whether they have chosen 100% injection or self-consumption with surplus injection.



### The customer

- Signs the contract with the grid operator.
- If the customer chooses self-consumption with 50% investment aid, they enter into a contract with the electricity supplier of their choice to negotiate a feed-in tariff for the surplus electricity.



Even if you have chosen to self-consume your electricity, you need to sign a feed-in contract to sell any surplus electricity to an electricity supplier. The supplier will pay you a fee based on current market prices, which change every month. You can find a list of suppliers operating in Luxembourg on the ILR website.

06



### The installer

- Installs the solar panels in accordance with the technical requirements in force.
- Completes the Declaration of Works and sends it to the grid operator.
- Prepares commissioning if the installation is connected to a meter.

07



### Network manager

- Checks the Declaration of Works and, if applicable, sets an appointment on site.
- If the installation includes two meters, arranges a meeting on site to check the installation and installs the second meter for commissioning.
- Draws up an invoice for the installation of the second meter.

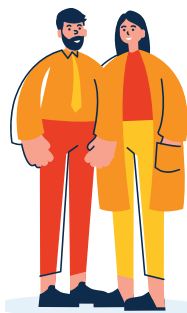
08



### The installer

- Prepares the invoice and sends the completed Klimabonus subsidy application form to the customer.

09



### The customer

- Plans the system maintenance and cleaning every 5 to 10 years by a specialist.
- Requests Klimabonus state subsidies via [myguichet.lu](http://myguichet.lu) or by mail
- Checks if they are eligible for the Topup social Klimabonus using the Klima-Agence subsidy simulator.
- If available, applies for municipal subsidies.

10



### Topup social Klimabonus:

Recipients of Klimabonus subsidies will be able to apply for "Topup social Klimabonus" from the Ministry of Housing and Spatial planning, which may result in a doubling of the Klimabonus subsidies, depending on the recipient's household income. This additional support is intended to enable households with an income below the national median to prevent the potential risk of energy poverty. The application forms for financial support are available at [www.guichet.lu](http://www.guichet.lu).

## Additional information



Contact your Klima-Agence advisor to ensure the success of your project:  
[klima-agence.lu/en?appointment](https://klima-agence.lu/en?appointment)



Find all the information concerning your photovoltaic project on:  
[subsidies.klima-agence.lu/details/522](https://subsidies.klima-agence.lu/details/522)

Get free, independent advice from a Klima-Agence advisor who will help you understand the process, the various consumption options and explain the subsidies you can obtain for your project.

If you would like to receive more information on the conditions for the Klimabonus state subsidies, the administrative procedures, the technical requirements for the photovoltaic installation and to simulate your project, try the Klima-Agence subsidy simulator: [subsidies.klima-agence.lu/pv](https://subsidies.klima-agence.lu/pv)

**Klima-Agence G.I.E.**  
2, Circuit de la Foire Internationale  
L-1347 Luxembourg  
T. +352 40 66 58  
R.C.S. Luxembourg C84  
[info@klima-agence.lu](mailto:info@klima-agence.lu)



For more information about your solar panel installation project, [click here](#) or scan the QR code.

Last updated October 2024